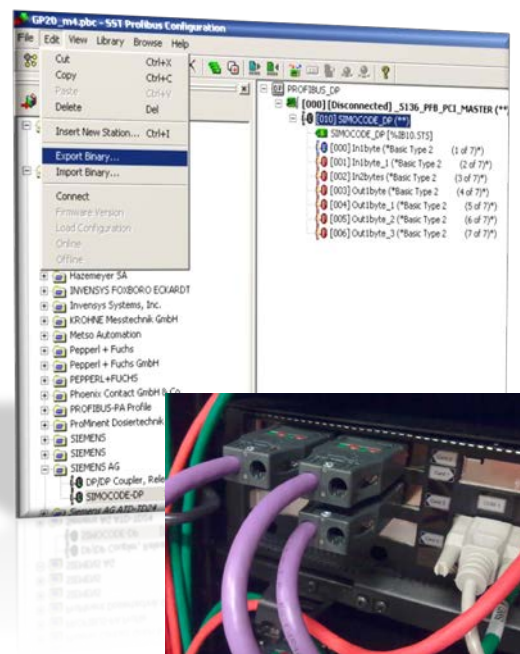


# Valmet DNA PROFIBUS DP interface course

This course provides a detailed review of the PROFIBUS DP and PA interface, when Valmet DNA environment is used. Starting with basics, limitations and recommendations when we are using different kind of devices, cables, connectors and terminators.

Practical exercises give also insight into DP interface configuration: creating and saving device configuration with Profibus configurator to the engineering database, loading parameters between database and DP interface, checking and changing device parameters with online connection. Process Controller applications and device diagnostic features are also explained with examples.



## Objective

After completing the course the participant will be able to manage PROFIBUS DP and PROFIBUS PA environments with know-how of limitations and recommendations. He will also be familiar with procedure when there are any needs to make configuration or device changes as well.

## Target group

Persons responsible for the maintenance of Valmet DNA.

## Prerequisite

Valmet DNA engineering course

## Course duration

1 day

## Course limit

Max. 8 attendees

## Benefits

Through Valmet's professional training programs, either standard courses or tailored to your specific needs, you will have optimized competences available in your organization. Together we make a development plan for your personnel based on your business needs, and deliver the agreed training flexibly and effectively.

Optimized competence development enables

- better utilization of features in the automation and control solutions
- proper installation, start-up, operation and maintenance of the solutions and equipment
- improved knowledge of product-related safety and environmental issues
- better employee motivation

The results are typically visible as higher productivity, plant availability, improvements in end product quality, time and material savings.

For more information, contact us:  
[www.valmet.com/automation/training](http://www.valmet.com/automation/training)  
[training.automation@valmet.com](mailto:training.automation@valmet.com)

# Course Program

**Day1, 9:00 – 16:00**

## **Valmet DNA PROFIBUS Interface basics**

- PROFIBUS DP
- PROFIBUS PA

## **PROFIBUS-DP, master vs. slave**

- ACN-PCS, PROFIBUS DP master
- SST-PROFIBUS -interface

## **PROFIBUS DP bus configuration**

- Profibus Configurator
- Device files (GSD, GSE)
- Changing the bus configuration (pbc and .bss-files)
- Downloading Profibus configuration

## **Valmet DNA application**

- Reading PROFIBUS data to PCS
- Valmet DNA application (Function Block Cad)

## **Diagnostics**

- Master diagnostics
- Slave diagnostics
- VNC-connection EAS => ACN
- Signal monitoring, Dpmon

